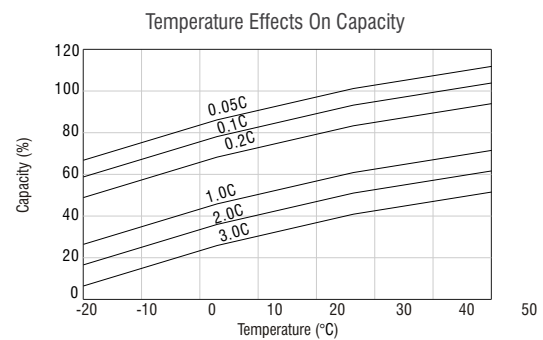
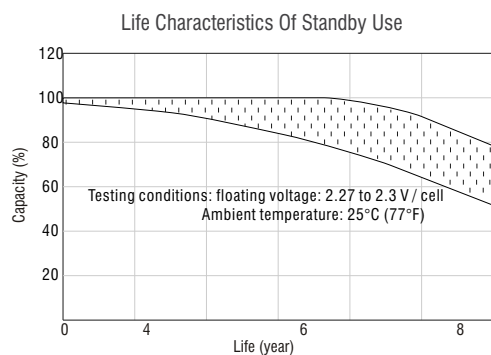
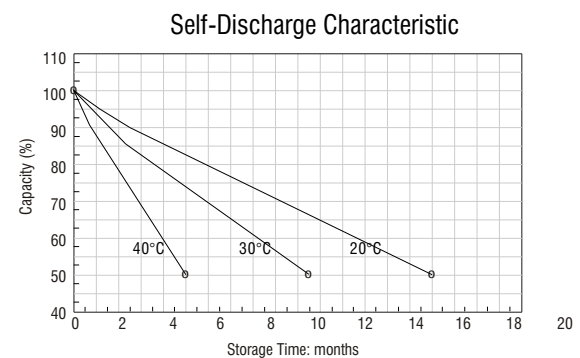
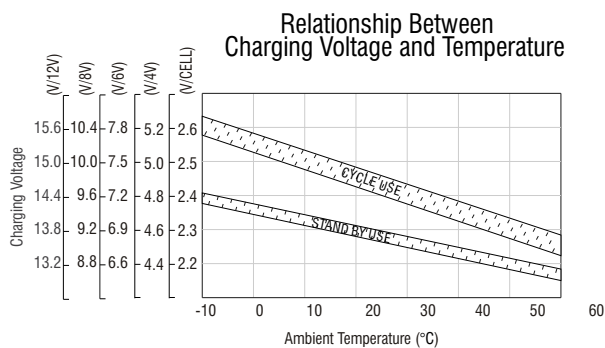
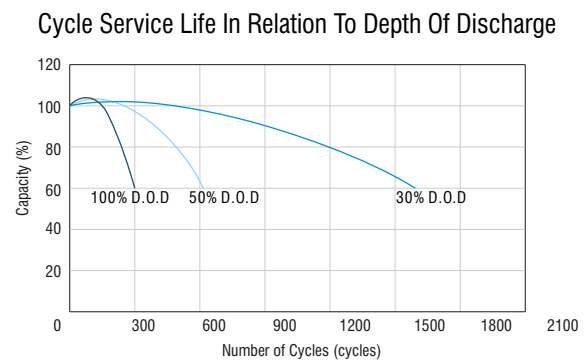
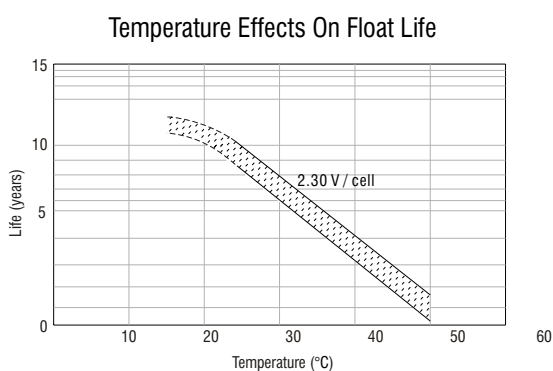
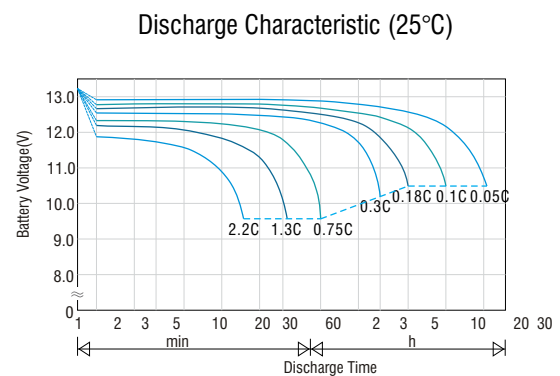
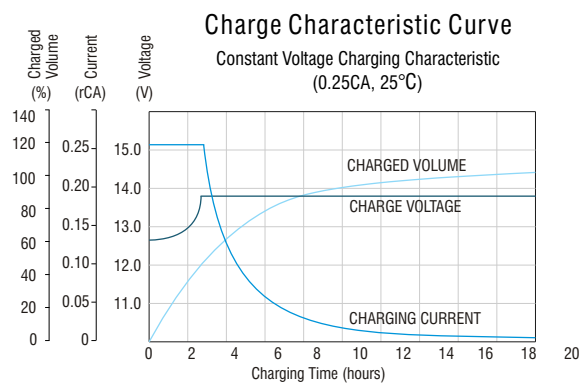


Africa's leading manufacturer and distributor of electronic security products.

Graphs



Africa's leading manufacturer and distributor of electronic security products.



SIREN SPECIFICATIONS

12V 15W SIREN



PRODUCT CODE: 862-02-005

PRODUCT FEATURES:

- Wired siren for alarm system
- Impedance: 6/8/12 Ohms
- Voice coil diameter: 18.3mm
- Voltage rating: 12V DC only 15W
- Operating voltage range: 9 to 16V DC/20 to 25V DC
- Power: 15/20/25W
- Acoustic/db: Mi105/108/110 (at rated voltage at 1M)
- Maximum current: 700/1,000/1,200mA
- Frequency: warble/1/6-tone
- Operating temperature: -20 to 60°C



SMS COMMUNICATOR

TELEMETRY/ALARM MONITORING & REMOTE ACTIVATION

Monitor and report via SMS on change of state on inputs with user definable SMS messages or Contact ID. Two of the inputs are optically isolated for high voltage applications such as electric fences and mains monitoring. An additional analogue input is provided for industrial applications as well as an AC input for mains fail/restore monitoring. Battery low is also reported.

Control onboard relays remotely (switch on, switch off, pulse or toggle) by SMS, missed call or timer. This is ideal for simple home automation such as switching on a light or opening a gate remotely from anywhere within the network provider's footprint.

The missed call functionality allows up to twenty cell phone numbers to be programmed and configured to control the relays. A confirmation report by SMS, of recognition of the phone numbers and execution of the required action can also be sent. Missed call functionality is useful for opening gates and doors with a cell phone, and generally carries no cost to the person making the call.

Stand alone timer unit - the device can act as a timer unit independent of GSM. Up to sixteen time intervals can be configured via the application software or via SMS to control the relays. This function is ideal for turning on lights automatically while away on holiday etc.

GENERAL FEATURES

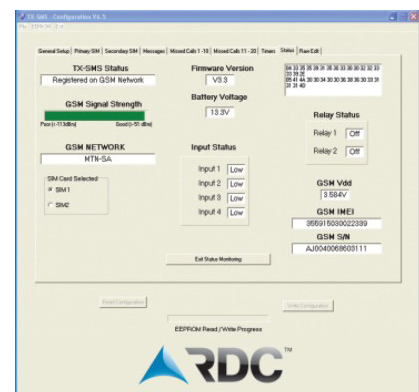
Report mains failure and low battery.
User configured auto-test at a specific time of the day.
Low battery unit shut down – with SMS notification. LED indication of GSM and unit status.
PC application software pre-configures units before installation.

Add, edit or delete the following actions via SMS:

- Four reporting users.
- SMS messages sent from inputs.
- Missed call numbers (up to 20 numbers).
- Associate a relay and action to a missed call number

Request pre-paid airtime balance.
Request unit status - input states, relay states, AC state, battery voltage and current time/date.
Set the unit date/time manually or by GSM network date/time..

A status screen shows GSM network status, signal strength, SIM card in use, input status, relay status, firmware version and battery voltage at a glance. This is useful during installation to ensure correct operation.



Programming



Program either by connecting the units to a PC and using the PC application supplied, or by sending SMS commands from your cellphone

