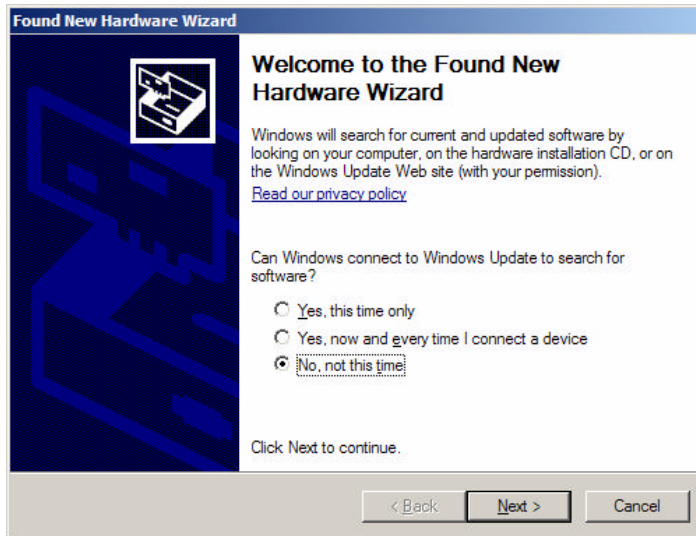
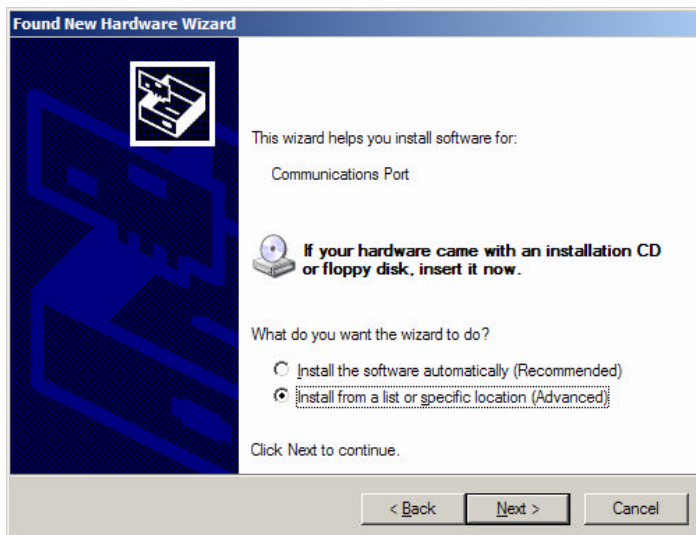


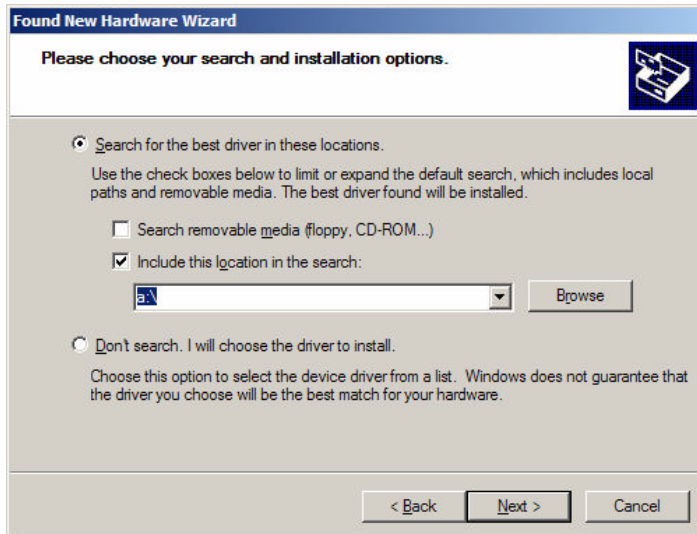
Installing The IDS Modem Driver:



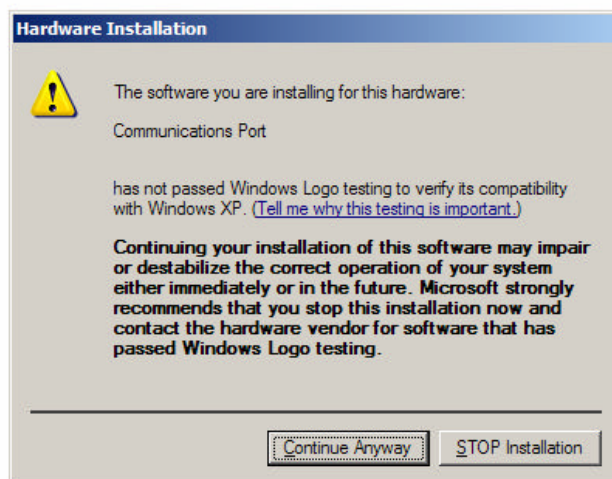
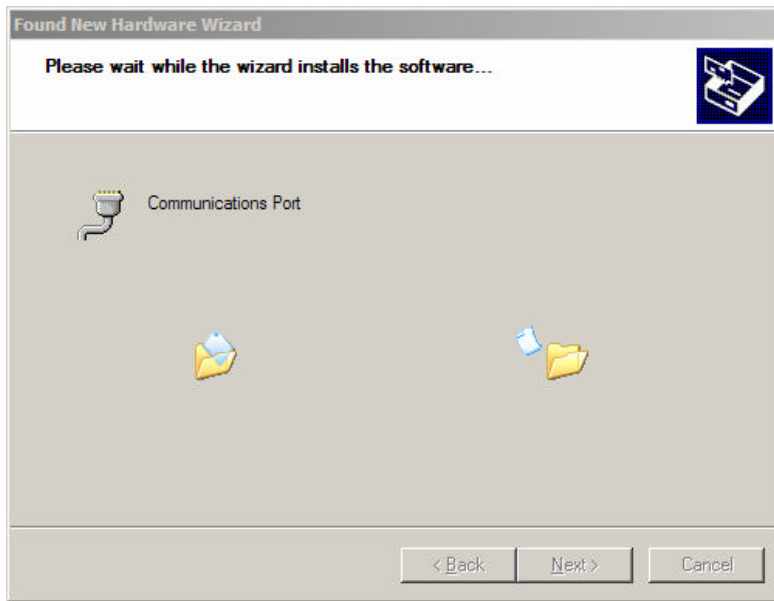
1. Choose “No, not this time” and click Next



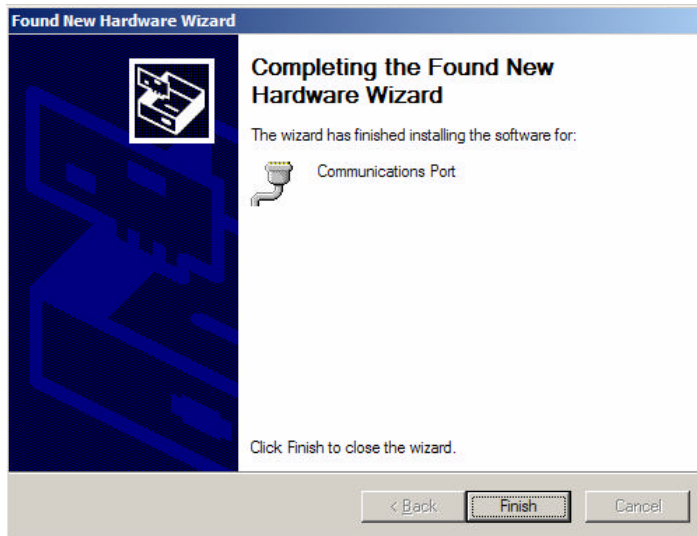
2. Choose “Install from a list or specific location (Advanced)” and click Next



- 3a. Choose “Search for the best driver in these locations”
- 3b. Tick only the “Include this location in the search” box.
- 3c. Click Browse and navigate to the folder which contains the inhmod.inf file.
- 3d. Click Next.



4. Click Continue Anyway



5. Click Finish.