

# IDS X-Series 8 Channel Output Expander

860-06-0596



## THANK YOU FOR CHOOSING IDS TO PROTECT YOU

Congratulations on your purchase of the IDS 8 channel output expander. IDS systems are powerful, versatile and highly configurable security systems, which should be installed by a professionally trained installer.

This manual covers the installation of the IDS X-Series output expander to the X-Series alarm panel.

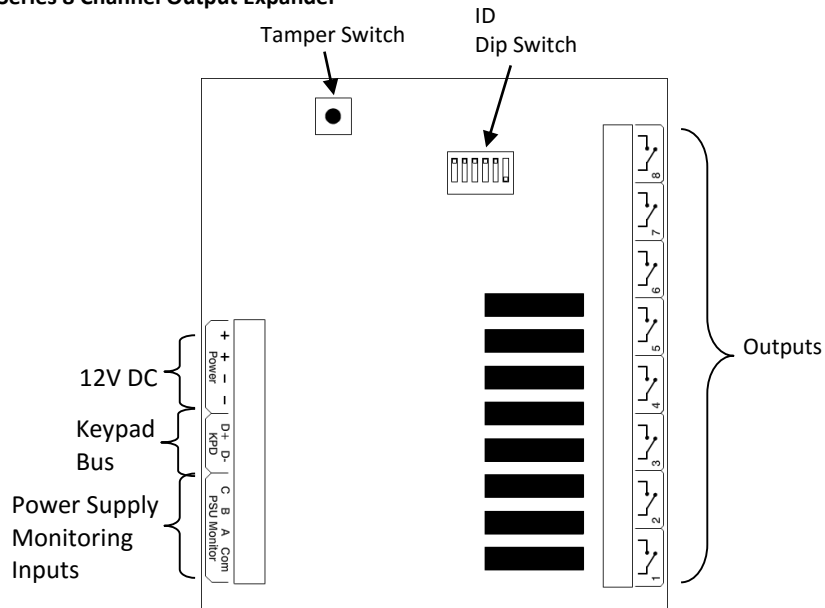
**Note:** To program the X-Series alarm panel to trigger these outputs please see the X-Series Installer Manual.

## Features

- Eight dry contact relay outputs
- Relay current maximum 1A DC
- Built-in tamper switch
- Smart Power Supply Monitoring (860-01-0537)

## Diagram

Figure 1: X-Series 8 Channel Output Expander



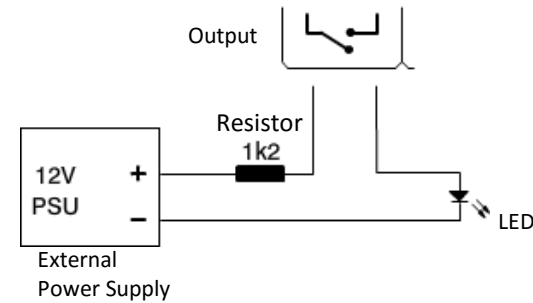
## X-Series Bus Connection

1. Make sure the X-Series panel is powered down!
2. Connect the keypad bus D+ and D- to the X-Series keypad bus D+ and D-
3. Connect the 12V DC to the keypad 12V DC on the X-Series panel
4. Select via the dip switches the output numbers
  - a. Switch 1 on = Output 18 to 25
  - b. Switch 2 on = Outputs 26 to 33
5. Power up the X-Series alarm panel

## Connecting to the outputs

The outputs have no power as they are relays. If the output is required to turn a device on or off, power must be connected via an external power source and current through the relay should not exceed **1A DC**. See figure 2:

Figure 2: Output Connection



**Note:** Some devices draw a large current when first switched on - known as "in-rush current". This occurs particularly if the device has a capacitor onboard. The "in-rush current" must not exceed **1A** otherwise the relay's contacts will be damaged. To prevent this, insert a resistor of at least 10 ohms in line with the device to limit the current.

## Technical Data

Input Voltage: 13V DC  
Current: minimum 28mA, maximum 130mA  
PCB Physical Size (mm): 94.75 x 96  
Operating Temperature: -10°C, +50°C  
Relay: 1A DC

## SiD's Tip

X-Series firmware version 2.5x can be set to trigger an output even if the alarm is not armed.

**Location 101 – 168: Zone properties option 7: Zone always triggers PGM.**

Example of where to use this option is for triggering LED lights outside as an early warning if someone walks through a set of beams, or in a passage to illuminate the area when a child goes to the bathroom at night.