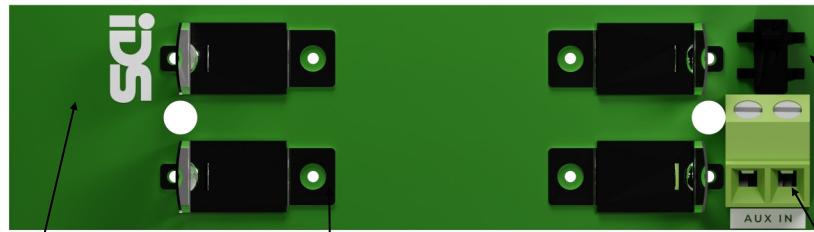


## Features

- **Works with the Onyyx and XSeries systems**
- **Protect roller shutter and garage doors**
- **Shock proof contact**
- **IP65 rated to seal out water**
- **External connector for 3rd party devices**
- **Two way wireless transmission (869Mhz)**
- **Up to 500m line of sight range**



# Outdoor ShutterSense

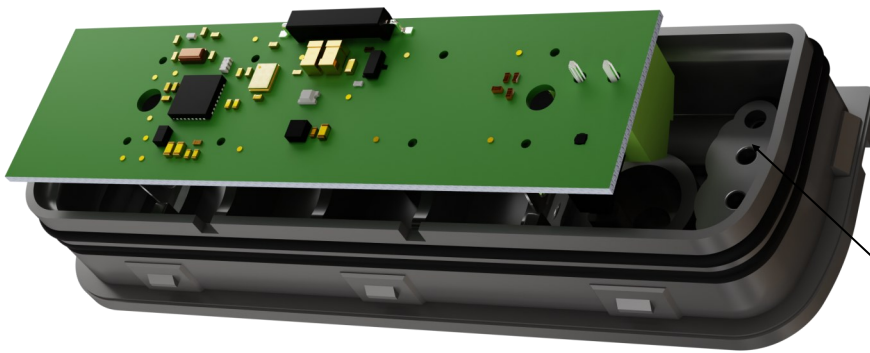


Antenna

Battery Holder

External Connection

Tamper Switch



Cable Entry



Cable Spacer



Rubber Grommets



# Outdoor ShutterSense

---

## Installing the Outdoor ShutterSense

- Fix the Outdoor ShutterSense contact next to the Roller Shutter door using the mounting holes.
- To preserve the IP rating, apply silicone to the screw wells after mounting.
- Mount the Roller Shutter contact on the floor under the roller shutter door.
- Mount the Roller Shutter Magnetic switch on the Roller Shutter door in alignment with the Roller shutter contact.
- Close the roller shutter door and verify that the roller shutter magnetic switch and contact are correctly aligned and making proper contact.

## Installing External Device

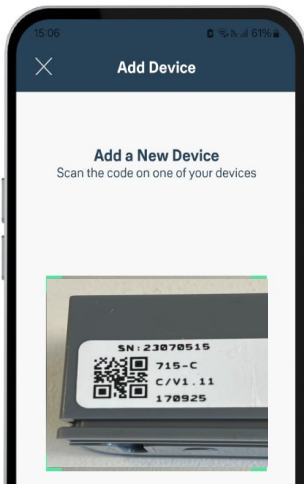
- To connect another detector to the external input, simply connect the wires to the AUX IN connector.
- Tap the cable entry knockouts and slide the cable through the cable entry.
- Slide the cable through the rubber grommets (included in packaging) and place on cable entry knockout.
- Slide the cable through the cable spacer (included in packaging) and fix to the door contact using the 2mmx6.5mm screws provided.
- Connect the cable to the external connection block.

**Note:** Verify that all wiring connections are correctly installed before closing the door contact, as the IP-rated seal provides a robust closure and may be challenging to reopen once secured.

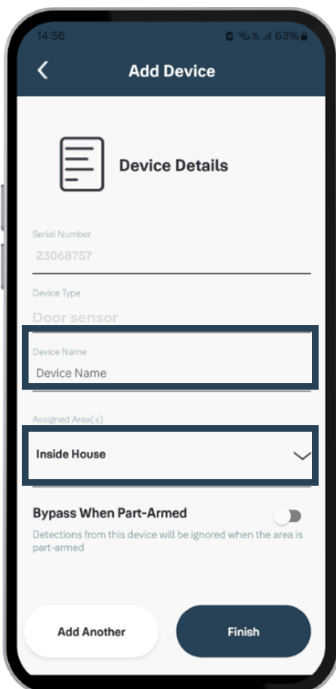
## Learning the Outdoor ShutterSense on the IDS XSeries panel

- Please refer to the XSeries installer manual to learn wireless detectors to the panel

## Learning the Outdoor ShutterSense on the Onyx app



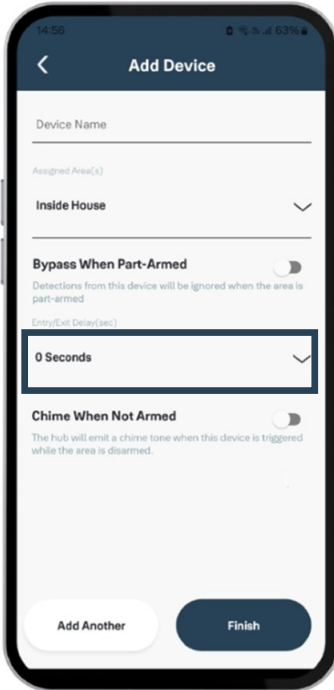
Learn the Outdoor ShutterSense to the Onyx app by scanning the QR code.



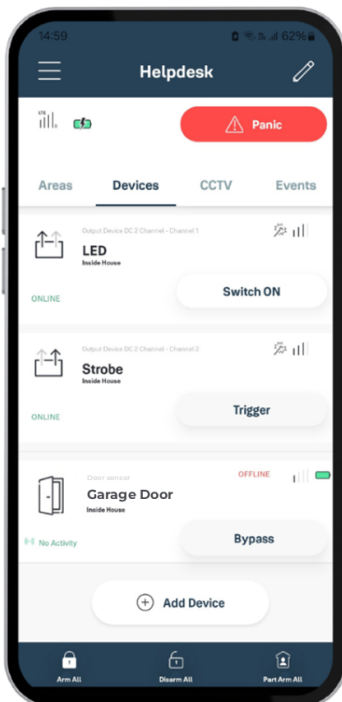
On the device details page, Give the Outdoor ShutterSense a name and select the area that it must belong to.



# Outdoor ShutterSense



Specify the Entry/Exit Delay time.



Once done, tap on finish to save the changes and your Outdoor ShutterSense will be added to your list of devices.