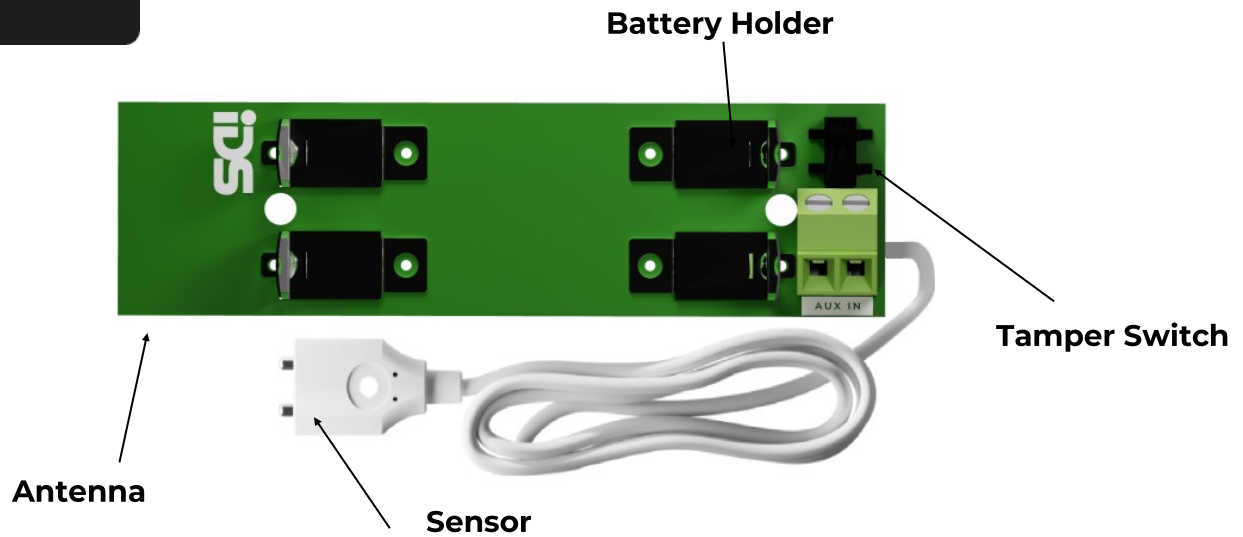




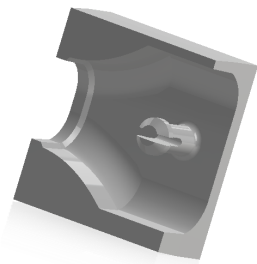
## **Features**

- **Works with the Onyyx and XSeries systems**
- **Sends alarm signals on water detection**
- **24 Hour reporting zone**
- **Up to 500m line of sight range**
- **Two way wireless transmission (868Mhz)**



## Installing the Leaksense

Fix the Leaksense onto the desired area.



- Mount the sensor clip where the device will monitor for water



- Attach the sensor onto the mounting clip

## Learning the Leaksense on the IDS XSeries panel

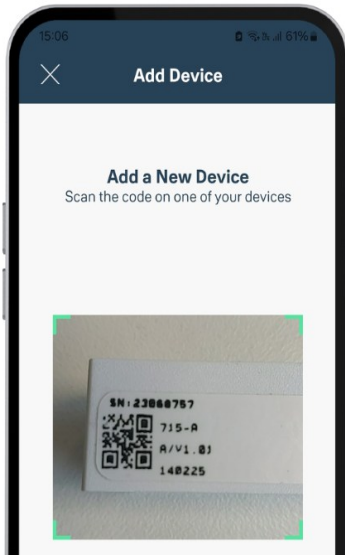
- Please refer to the XSeries installer manual to learn wireless detectors to the panel

**Note:** There are no customization options when the Leaksense is learnt on the IDS XSeries panel.

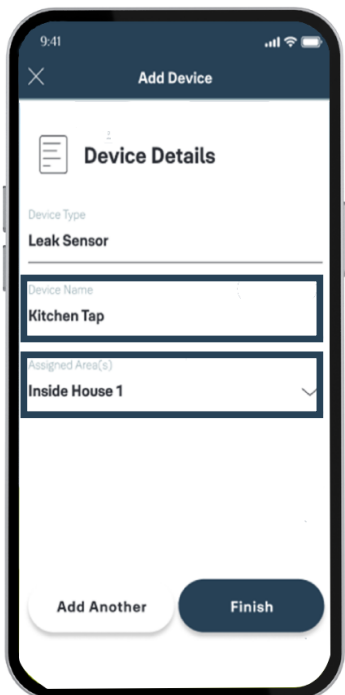


# Leaksense

## Learning the Leaksense on the Onyyx app



Learn the Leaksense to the Onyyx app by scanning the QR code.

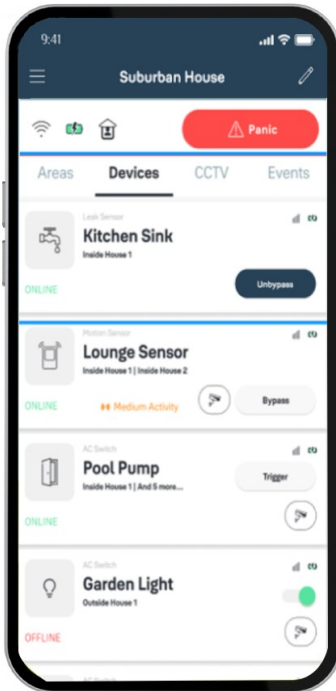


On the device details page, Give the Leaksense a name and select the area that it must belong to then tap finish or add another if you have another Leaksense to add.



# Leaksense

---



The Leaksense will be added to your list of devices