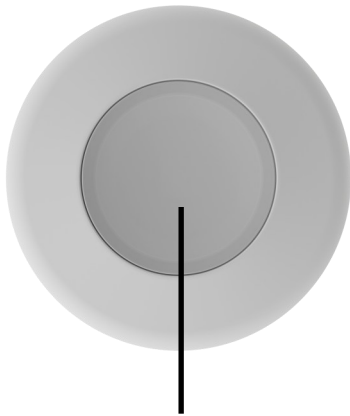


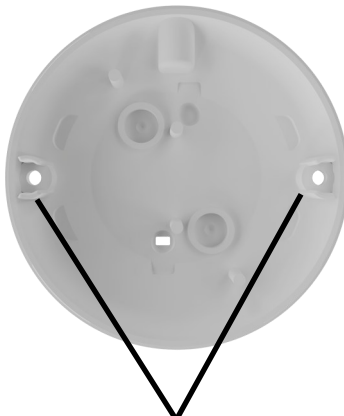


Features

- **Works with the Onyyx and XSeries systems**
- **Allows you to Trigger Panics, Fire, Medical, Chime, Relays and Scenarios**
- **Short and long press options**
- **Can be Permanently wall mounted or used as a Pendant.**
- **Status reporting back to the Onyyx System.**



Button



Mounting Holes



Key-Ring Hook

Installing the Wireless Button

Wall Mounted:

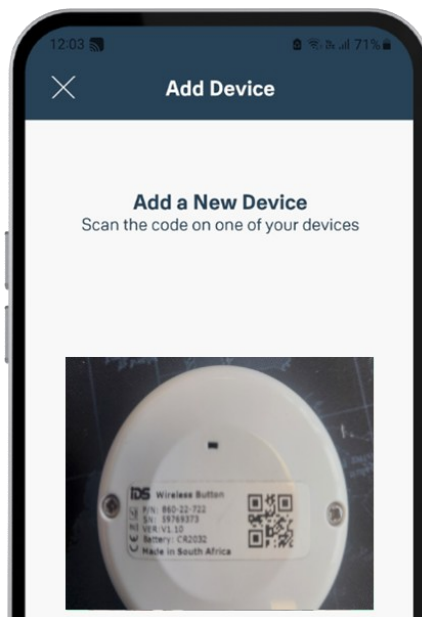
Mount the wireless button securely to the desired location using the mounting holes.

Pendant

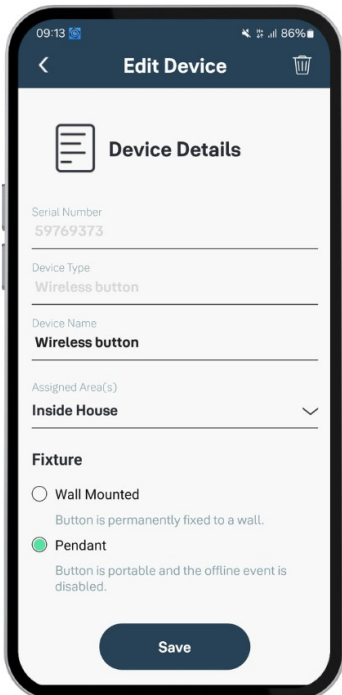
Remove the back cover, rotate it, and reinsert it ensuring that it securely covers and presses down on the tamper button. Screw the back to the housing and insert Keyring or Lanyard in the key-ring hook

Learning the Wireless Button on the Onyyx app

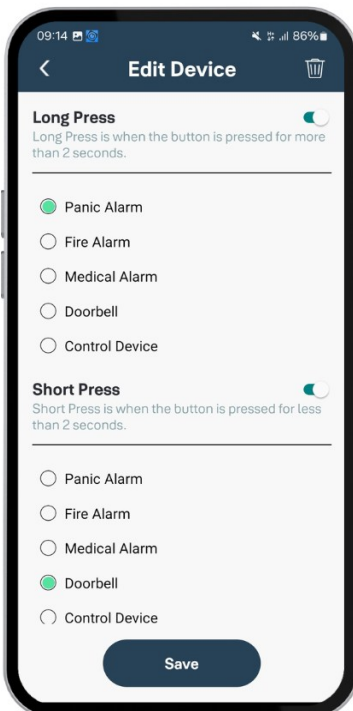
Learn the Wireless Button to the Onyyx app by scanning the QR code.



Wireless button



On the device details page, give the wireless button a name and select whether the button will be wall mounted or used as a pendant then scroll down.



Toggle on the long press option and select the function that will be associated with a long press of the wireless button.

Toggle on the short press option and select the function that will be associated with a short press of the wireless button then tap save.



Wireless button

Learning the Wireless Button on the XSeries panel.

On the XSeries panel the wireless button will be learnt as an Xwave² remote. By default:

Short press : Arm/Disarm

Long Press : Panic

Please refer to the XSeries user manual on how to add an Xwave² remote to the XSeries panel.