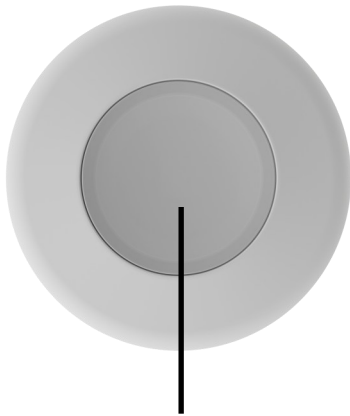


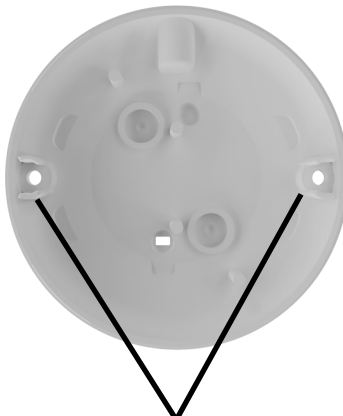


## **Features**

- **Works with the Onyyx and XSeries systems**
- **Allows you to Trigger Panics, Fire, Medical, Chime, Relays and Scenarios**
- **Short and long press options**
- **Wall mounted or used as a Pendant**



**Button**



**Mounting Holes**



**Lanyard Hook**

## Installing the Wireless Button

### **Wall Mounted:**

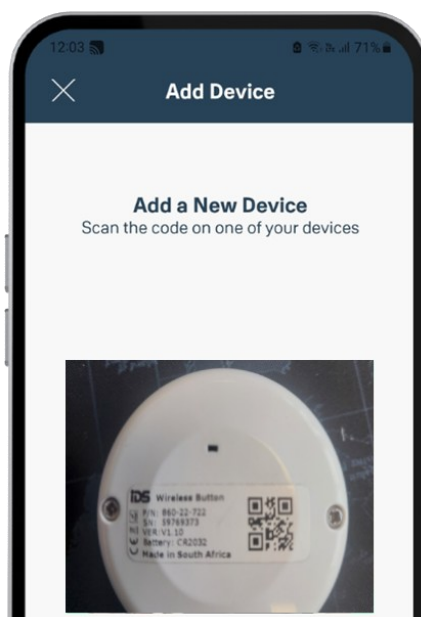
Mount the wireless button securely to the desired location using the mounting holes.

### **Pendant**

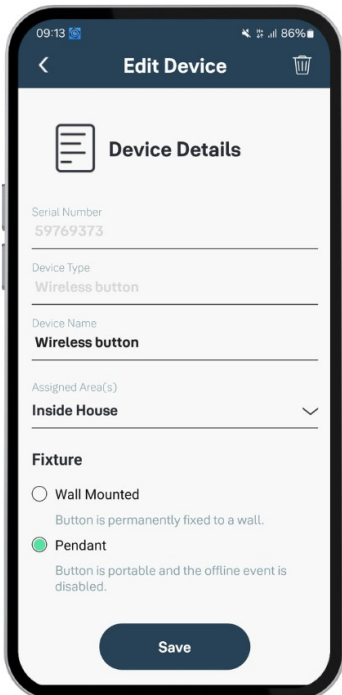
Insert Keyring or Lanyard in the lanyard hook.

## Learning the Wireless Button on the Onyx app

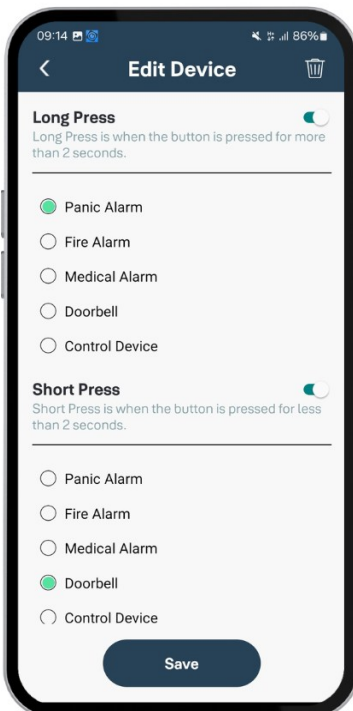
Learn the Wireless Button to the Onyx app by scanning the QR code.



# Wireless button



On the device details page, give the wireless button a name and select whether the button will be wall mounted or used as a pendant then scroll down.



Toggle on the long press option and select the function that will be associated with a long press of the wireless button.

Toggle on the short press option and select the function that will be associated with a short press of the wireless button then tap save.

## **Learning the Wireless Button on the XSeries panel.**

On the XSeries panel the wireless button will be learnt as an Xwave<sup>2</sup> remote.  
(The XWave<sup>2</sup> Wireless Hub is required)

By default:

**Short press** : Arm/Disarm

**Long Press** : Panic (this option is not configurable)

***Please refer to the XSeries user manual on how to add an Xwave<sup>2</sup> remote to the XSeries panel.***

## **Configuring the function of the short press on the XSeries panel**

1. Enter the Master User Menu
2. Scroll to menu [Edit BD Buttons] or enter [1][7][\*]
3. Enter the Hub that the remote belongs too
4. Enter the user code that was paired with the remote
5. Scroll through the buttons until the button to be changed and press [\*]
6. Scroll through until the function required and press [\*] to confirm
7. Enter the parameter followed by [\*] to confirm (The parameter will be the partition number or the output number.)

## **List of functions**

- Arm/Disarm
- Stay Arm
- Duress Disarm
- Medical
- Fire
- Trigger a PGM