

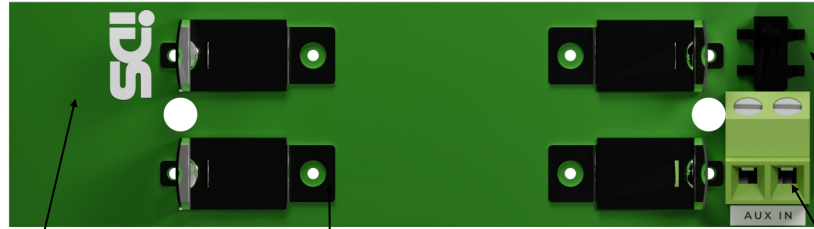


Features

- **Works with the Onyyx and XSeries systems**
- **DoorSense and DoorSense^{Vibe} options**
- **Sends an open and close signal**
- **Sends alarm signals on knocking, vibration or tilting (Vibe only)**
- **IP65 rated to seal out water**
- **External connector for 3rd party devices**
- **Two way wireless transmission (869Mhz)**
- **Up to 500m line of sight range**



OutdoorSense

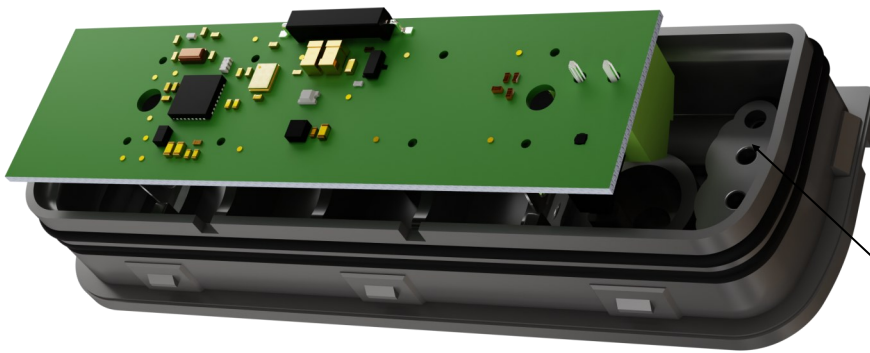


Antenna

Battery Holder

External Connection

Tamper Switch



Cable Entry



Cable Spacer



Rubber Grommets

Installing the OutdoorSense

- Fix the OutdoorSense on to the required position using the mounting holes.
- To preserve the IP rating, apply silicone to the screw wells after mounting.
- Close the door and mount the magnet on to the door next to the flat side of the contact.

Installing External Device

- To connect another detector to the external input, simply connect the wires to the AUX IN connector.
- Tap the cable entry knockouts and slide the cable through the cable entry.
- Slide the cable through the rubber grommets (included in packaging) and place on cable entry knockout.
- Slide the cable through the cable spacer (included in packaging) and fix to the door contact using the 2mmx6.5mm screws provided.
- Connect the cable to the external connection block.

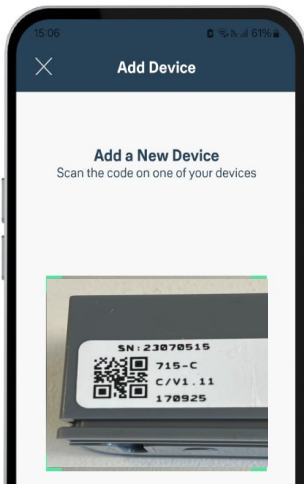
Note: Verify that all wiring connections are correctly installed before closing the door contact, as the IP-rated seal provides a robust closure and may be challenging to reopen once secured.

Learning the OutdoorSense on the IDS XSeries panel

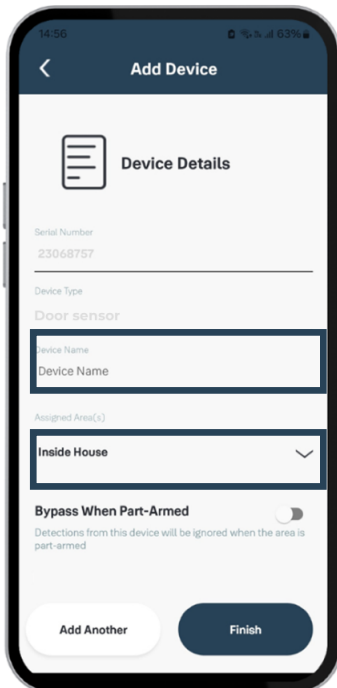
- Please refer to the XSeries installer manual to learn wireless detectors to the panel.

Note: There are no customization options when the OutdoorSense^{Vibe} is learnt on the IDS XSeries panel.

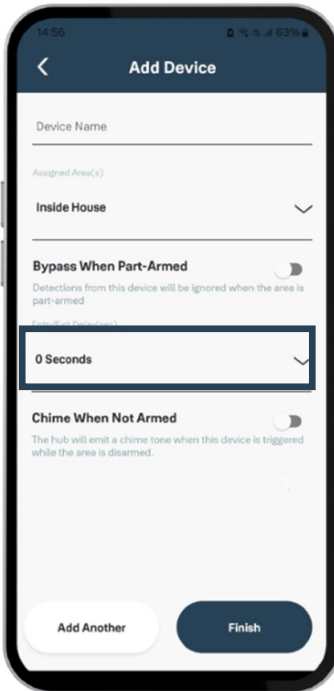
Learning the OutdoorSense on the Onyyx app



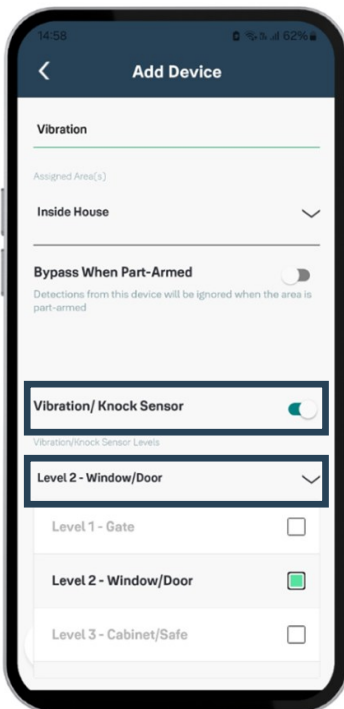
Learn the OutdoorSense to the Onyyx app by scanning the QR code.



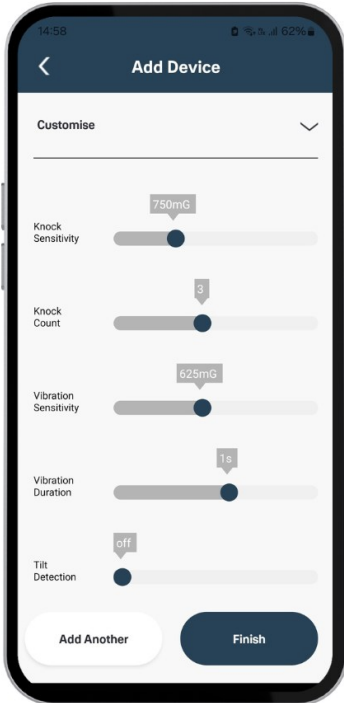
On the device details page, Give the OutdoorSense a name and select the area that it must belong to.



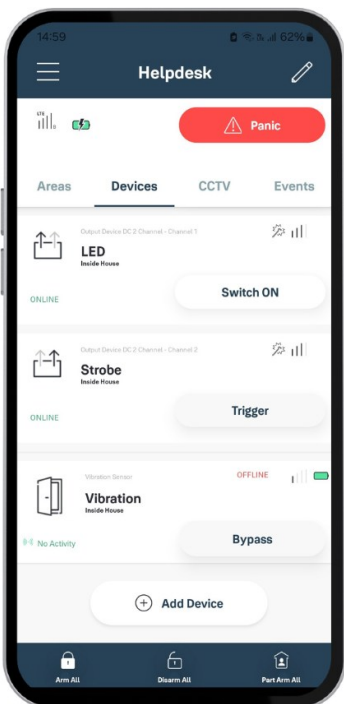
Specify the Entry/Exit Delay time.



When using the OutdoorSense^{Vibe}, toggle on Vibration/Knock Sensor and set the vibration sensor level depending on where the device will be placed.



There is a custom option available if you need to fine tune the sensitivity for your specific requirements.



Once done, tap on finish to save the changes and your OutdoorSense will be added to your list of devices.